

How-to-Guide for Connecting the NETBlazer™ to a Wi-Fi Hotspot

Plug in the NETBlazer™ into your Laptop's USB port



Plug your NETBlazer™ into your laptop's USB port. It will be up and operational after approximately 35 seconds.

Your NETBlazer™ is an active router and VPN tunneling device. The integrated Wi-Fi client is used to connect to public hot-spots.

The configuration of the NETBlazer™ will also allow you to "log-in" through captive

portals often found at hotels and coffee shops.

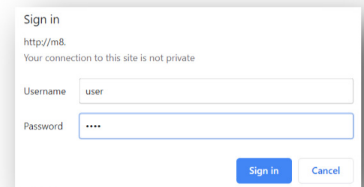
Once connected to the Internet your NETBlazer™ will automatically link you to your office.

Note: It is generally best-practice to TURN OFF your current laptop Wi-Fi when using the NETBlazer™ as it will provide both the VPN and Internet access simultaneously.

How to Connect your NETBlazer™ to a NEW Wi-Fi Network

Your NETBlazer™ requires connection to a Wi-Fi hot-spot to operate. Your NETBlazer™ will remember Wi-Fi networks you have previously configured so you should only need to add them once. On power-up it will search for known networks and connect automatically if one is found. **To add a Wi-Fi network**

- 1) Open your web browser to: **http://M8**. and Sign-in with the Username=user and the Password=user *Note: For convenience make a shortcut on your desktop or bookmark.*
- 2) When you sign-in you will see the Networking page. The Other Networks block shows the Wi-Fi networks in range.
- 3) To add a Wi-Fi network to your NETBlazer™ click on the **Add Network** button. The page will update and refresh. If the connection is successful, you will see the Wi-Fi detail in the upper right corner. Also, the Wireless indicator on the NETBlazer™ will be solid green. **NOTE:** If the network you are connecting to requires a passphrase enter it in the passphrase box before adding the selected Wi-Fi Network.

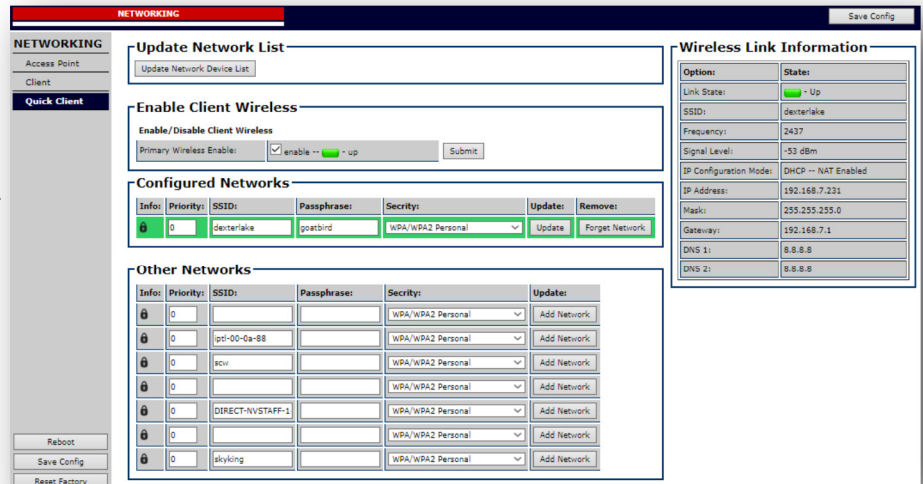


The NETBlazer™ will automatically remember Wi-Fi networks configured and you will not need to Save Config.

Upon each power-up, the NETBlazer™ will scan for Wi-Fi networks that are remembered and automatically connect without user intervention.

You may need to open a browser to log-in or accept terms of service from the organization that is offering Wi-Fi. (this is called a captive-portal login).

Once agreed the tunnel will be established and you will also be able to surf the Internet simultaneously.



Status Indicators on the NETBlazer™



There are two indicators on the top of the NETBlazer™ which tell status-at-a-glance.

Tunnel Connectivity glows solid when connected and flashes when attempting a VPN/Tunnel.

Wi-Fi Connectivity glows solid when connected to a Wi-Fi hot-spot and flashes when not connected to an access point.